

BURR KING

12", 24" & 36" SURFACE GRINDER

THE 92110-SGX SURFACE GRINDER FROM BURR KING FEATURES PRECISION SURFACE GRINDING AT AN AFFORDABLE PRICE! KIT INCLUDES -

- 1.5 HP, 120V Variable Speed 960-250, 2.5 x 60 Belt Grinder
- Dynamically Balanced Serrated 90 Duro Contact Wheel
- SG1200 Surface Grinder Base
- X-Axis Slide on all Models
- Choice of 12, 24 or 36" Mag Chuck
- SG120 Features Built-in Sine Bar for Taper Grinding
- Dial Indicator Holder

FIRST 5-AXIS BELT SURFACE GRINDER

STANDARD SURFACE GRINDER FEATURES:

- SG1200 Constructed From 6061T6 Aluminum
- Precision, Double Sealed, Self-Oiling Heavy Duty Linear Guideways
- High Strength Neodymium Magnets
- Interchangeable Magnetic Chuck Design
- Cast Iron Magnetic Chuck Reduces Rust and Increases Strength
- Made in the USA

STANDARD 960-250 BELT GRINDER FEATURES:

- Contact wheel, platen and work support grinding
- Adjustable belt tension
- Positive belt tracking
- Quick belt change
- Up to 8000 SFPM belt speed standard
- Compact footprint friendly to "cell" manufacturing
- Adapts for "tool post" or "on center" grinding
- Adapts for robot mounts
- Variable speed 120/220-1 PH, and 220/440-3 PH options
- Precision machined cast aluminum frame
- OSHA compliant, enclosed guarding



CONVERT YOUR EXISTING 960-250 TO A SURFACE GRINDER

Check with factory to see which options retrofit your machine



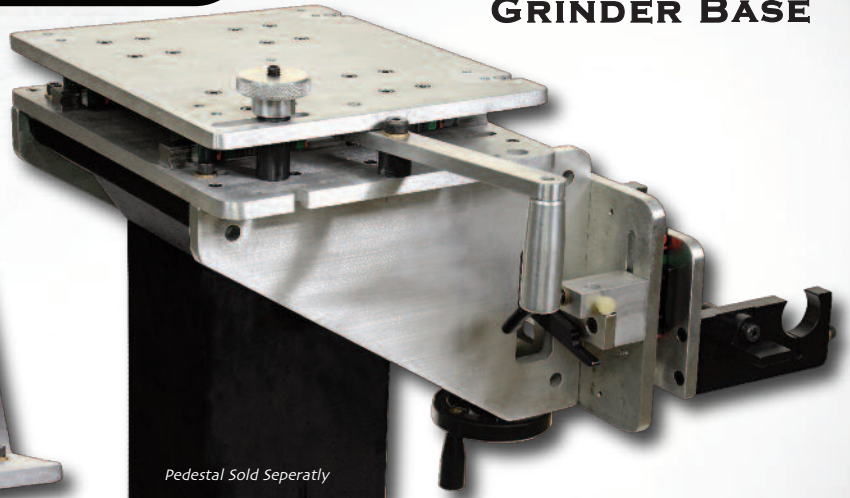
92110-SG12X

Shown with optional dial indicator

SURFACE GRINDER OPTIONS



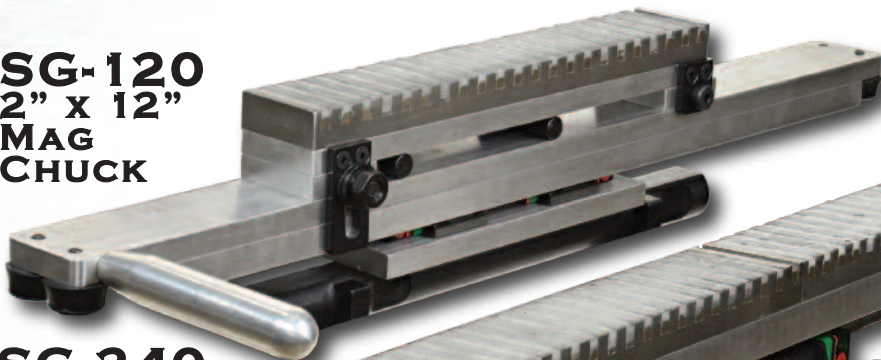
**SG-1200
SURFACE
GRINDER BASE**



Pedestal Sold Separately

**TD-1000
TILTING BASE**

**SG-120
2" X 12"
MAG
CHUCK**



**SG-240
2" X 24"
MAG CHUCK**



**SG-360
2" X 36"
MAG CHUCK**



**CONVERT YOUR EXISTING
960-250 TO A SURFACE
GRINDER. AVAILABLE OPTIONS**

- TD-1000 Tilting Base - Horizontal or Vertical
 - SG-1000 Surface Grinder Base with choice of Magnetic Chuck Length with X-Axis
 - 760T-2 Tool Tray
 - TD-1000 Tilting Base
 - MB-5 - Variable Speed Controller Mounting Bracket
- Check with factory to see which options retrofit your machine*